

RESOURCES AGENCY OF CALIFORNIA  
DEPARTMENT OF CONSERVATION  
DIVISION OF OIL, GAS, AND GEOTHERMAL RESOURCES

# REPORT OF WELL PLUGGING AND ABANDONMENT

Cypress, California  
December 17, 2009

Mr. Phillip J. Pace, Agent  
PHILLIP J. & PHYLLIS M. PACE TRUSTEE  
P.O. Box 159  
Montebello, CA 90640

Your report of the plugging and abandonment of well "Aeco-Rhc" 2, A.P.I. No. 037-18414, Section 17, T. 2S, R. 11W, S.B. B & M., Whittier Field, Los Angeles County, dated 11/04/09, received 11/06/09, has been examined in conjunction with operations witnessed and records filed in this office.

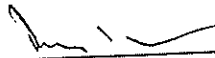
We have determined that all of the requirements of this Division have been fulfilled relative to plugging and abandonment of the well, removal of well equipment and junk and the filing of well records.

**NOTE:**

1. Surface plugging completed on 10/03/07.
2. Surface inspection made and approved on 10/04/07.

Elena M. Miller

\_\_\_\_\_  
State Oil and Gas Supervisor

By:   
For: William E. Brannon, Deputy Supervisor

NO BOND REQUIRED

EM:tl

Cc: Update  
L.A. County Assessor ✓  
L.A. County Fire Prevention Bureau  
Gregory R. Ryan, Ryan & Associates

RESOURCES AGENCY OF CALIFORNIA  
DEPARTMENT OF CONSERVATION  
DIVISION OF OIL, GAS, AND GEOTHERMAL RESOURCES

## REPORT OF WELL PLUGGING AND ABANDONMENT

Cypress, California

January 5, 2010

Mr. Phillip J. Pace, Agent  
PHILLIP J & PHYLLIS M. PACE, TRUSTEE  
P.O. Box 159  
Montebello, CA 90640

Your report of the plugging and **abandonment** of well "Aeco-Pellissier" 1, A.P.I. No. 037-18412, Section 17, T. 2S, R. 11W, S.B. B & M., Whittier Field, Los Angeles County, dated 11/04/09, received 11/05/06, has been examined in conjunction with operations witnessed and records filed in this office.

We have determined that all of the requirements of this Division have been fulfilled relative to plugging and **abandonment** of the well, removal of well equipment and junk and the filing of well records.

**NOTE:**

1. Surface plugging completed on 04/16/07.
2. Surface inspection made and approved on 10/30/07.

Elena M. Miller

State Oil and Gas Supervisor

By: 

For: Kenneth M. Carlson, Acting District Deputy

NO BOND REQUIRED

EM:tl

Cc: Update  
L.A. County Assessor ✓  
L.A. County Fire Prevention Bureau  
Gregory R. Ryan, Ryan & Associates



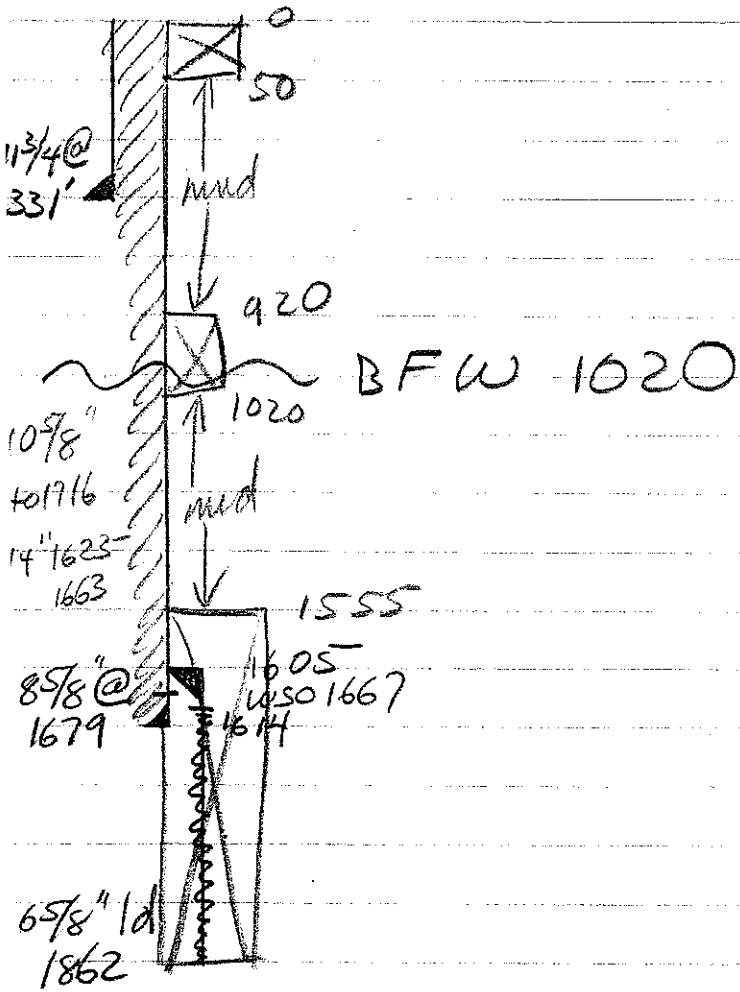
County of  
Los Angeles  
Fire Department

TEL: (213) 890-4232  
FAX: (213) 838-1089  
Office Hours: 7:00 to 10:30 a.m.  
EMAIL: [tmgarcia@lacofd.org](mailto:tmgarcia@lacofd.org)

**TOM GARCIA**  
Inspector  
Petroleum-Chemical Unit  
Fire Prevention Division  
Prevention Bureau

5823 Rickenbacker Road  
Commerce, CA 90040

Forster Oil Co.  
"Aeco-Pellissier"  
Whittier



ED 1867  
TD 8574

## WHITTIER FIELD RULES

Date:  
4/26/2007

Area(s) Rideout Heights	Zone(s)/Pool(s) A-3, Miocene, Pliocene
----------------------------	---

**CASING PROGRAM**

Casing String	Cementing Depth		Annular Cement Fill (Marker or Zone + ___')
	Marker or Zone	Remarks	
Conductor	As needed, 80'±		To Surface
Surface	400' – 500'		To Surface
Production	Through intended zone	Top of Repetto with liner completion	To Surface
Liner (optional completion)	Through intended zone		

**GEOLOGIC DATA**

Reference: Pages 583-588 in DOGGR publication TR-12, Volume 2, California Oil & Gas Fields.

**BLOWOUT PREVENTION EQUIPMENT PROGRAM (Referenced from MO7)**

Operation	Surface Pressure Category	DOGGR Class	Additional Requirements
Drilling	Medium	IIIB2M	Hydraulic BOPE
Completion	Medium	II2M	Manual or Hydraulic BOPE
Perforating	Medium	Lubricator or pack-off	
Additional Comments:			

**BASE OF FRESH WATERS**

Marker:	150' – 650' subsurface	Comments: BFW varies with proximity (north-south) of the Whittier Fault.
---------	------------------------	--

**GENERAL COMMENTS**

*Field rules apply to development wells only. All operations are subject to California Code of Regulations., Title 14, Division 2, Chapter 4.*

STATE OF CALIFORNIA  
 DEPARTMENT OF CONSERVATION  
 DIVISION OF OIL, GAS, AND GEOTHERMAL RESOURCES

**Notice of Intention to Abandon Well**

File in Duplicate

FOR DIVISION USE ONLY		
	Forms	
Bond	OGD114	OGD121

In compliance with Section 3229, Division 3, Public Resources Code, notice is hereby given that it is our intention to abandon

Well Pellissier API No. 037-18412 Sec. 17 T. 2 S R. 11 W S.B. B.&M.

Whittier Field Los Angeles County, starting work on 08/20/07

The present condition of the well is

1. Total depth: 1862
2. Complete casing record, with plugs and perforations (present hole):

**\*See Attached Diagram**

3. Date last produced or injected: 07/31/07

Additional data for dry hole (show depths)

1. Oil or gas shows:
2. Stratigraphic markers:
3. Formation and age at total depth:
4. Base of freshwater sands:

Is this a critical well according to the definition on the reverse side of this form (or on page 2 if you are using the Internet)?

Yes  No

The proposed work is as follows:

Install BOPE, Tag cleanout depth of 1862'. Place Class G cement plug from 1862' - 1567'. Tag top of cement. Mud hole with mud of minimum 72 pcf weight and 25 lb./100 sq. ft. gel-shear strength from top of cement to surface. Perforate 4 (1/2") JH at 750' (BFW). Place Class G cement plug from 800' to 700'. Tag top of cement. Place Plug from 100' to surface.

It is understood that if changes in this plan become necessary, we are to notify you immediately.

Address 400 N. Montebello Blvd. Floor 2  
(Street)

(Name of Operator)

Pellissier #1

ARJ  
0.37-18412

STADTLER®  
No. 937 811E  
Engineer's Computation Pad

KB 10'

11 3/4" 42# 0' - 330'

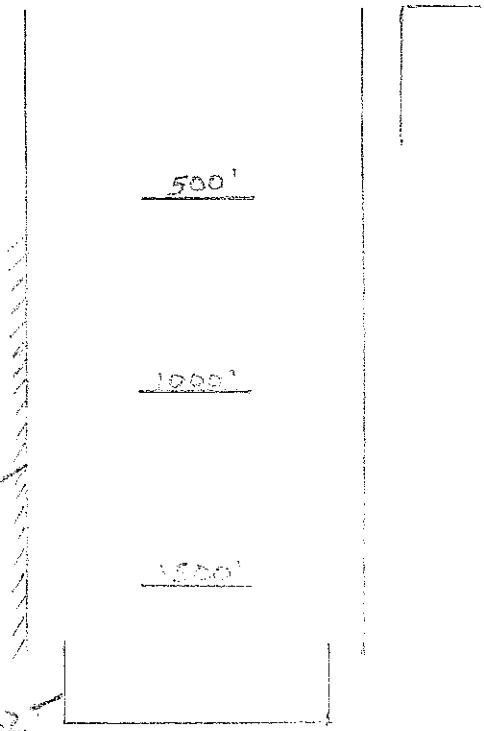
500'

1000'

8 5/8" 24# 0' - 1679'  
1667' WSD  
430 SX

1500'

6 5/8" 26# 1672' - 1862'



Pellissier

PI  
US 7-12412

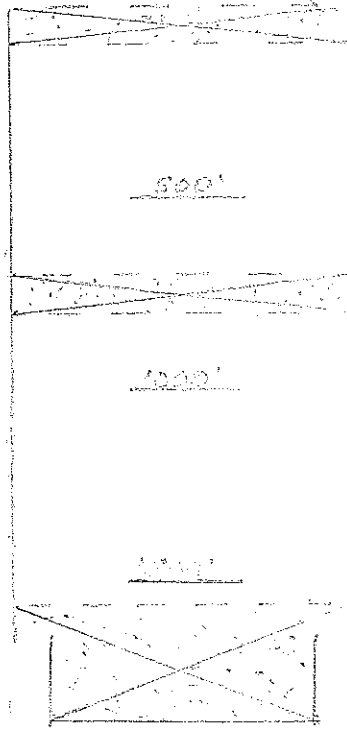
No. 937 811E  
Engineer's Computation Pad  
STADTLER

KB 10'

11 3/4" 42# 0'-230'

5 1/2" 21# 0'-1079'  
166' 230  
475 lb  
ETOC.

6 1/8" 26# 1367'-1567'



Plug 1000' - 0

BFW 750  
Plug 600 - 700

Plug 1367' - 1567'



STATE OF CALIFORNIA  
DEPARTMENT OF CONSERVATION  
DIVISION OF OIL, GAS, AND GEOTHERMAL RESOURCES

**Notice of Intention to Abandon Well**

File in Duplicate

FOR DIVISION USE ONLY		
Bond	Forms	
	OGD114	OGD121

In compliance with Section 3229, Division 3, Public Resources Code, notice is hereby given that it is our intention to abandon

Well <sup>ASCA</sup> RHC 112 API No. 037-18419 Sec. 17 T. 2-S R. 14W S.6 B.&M.  
Whittier Field Los Angeles County, starting work on \_\_\_\_\_

**The present condition of the well is**

- Total depth: 1772
- Complete casing record, with plugs and perforations (present hole):  
\* See attached

3. Date last produced or injected:

**Additional data for dry hole (show depths)**

- Oil or gas shows:
- Stratigraphic markers:
- Formation and age at total depth:
- Base of freshwater sands: 750 ft.

Is this a critical well according to the definition on the reverse side of this form (or on page 2 if you are using the Internet)?

Yes  No

**The proposed work is as follows:**

Install BOPF, tag cleanout depth of 1772. Place (class G cement) plug from 1772-1340'. Tag top of cement. Mud hole with mud of min 72 pcf weight and 25 lb/100 sq ft. gel-shear strength from top of cement to surface. Perforate 4(1/2") JH at 750' (BFW) Place cement plug from 800' to 700' Tag top of cement. Place plug from 100' to surface.

It is understood that if changes in this plan become necessary, we are to notify you immediately.

Address \_\_\_\_\_  
(Street)

By \_\_\_\_\_  
(Name of Operator)

By

## CRITICAL WELL

As defined in the California Administrative Code, Title 14, Section 1720 (a), "Critical well" means a well within:

- (1) 300 feet of the following:
  - (A) Any building intended for human occupancy that is not necessary to the operation of the well; or
  - (B) Any airport runway.
  
- (2) 100 feet of the following:
  - (A) Any dedicated public street, highway, or nearest rail of an operating railway that is in general use;
  - (B) Any navigable body of water or watercourse perennially covered by water;
  - (C) Any public recreational facility such as a golf course, amusement park, picnic ground, campground, or any other area of periodic high-density population; or
  - (D) Any officially recognized wildlife preserve.

Exceptions or additions to this definition may be established by the supervisor upon his own judgment or upon written request of an operator. This written request shall contain justification for such an exception.



**RICK AUERBACH • ASSESSOR**  
 500 WEST TEMPLE STREET  
 LOS ANGELES, CALIFORNIA 90012-2770  
*lacountyassessor.com*  
 888.807.2111



1/27/2010

Mr. Phillip J. Pace  
 P.O. Box 159  
 Montebello, CA 90640

**WELL ABANDONMENT**

We have been notified by the Department of Conservation, Division of Oil, Gas, and Geothermal Resources regarding the abandonment of the following well(s) in the **Whittier** field(s):

Well Name/No.	API No.
"Aeco-Rhc" 2	037-18414
"Aeco-Pellissier" 1	037-18412

For each abandoned well listed above, please complete a separate well abandonment report. The information requested will assist us in our annual evaluation of mining rights properties.

Thank you for your cooperation. Please send to Assessor's Office, 500 West Temple, RM 183, Los Angeles, CA, 90012. Please call me if you have any questions.

Anthony Calderon  
 Appraiser Specialist  
 Natural Resources Section  
 Major Real Properties Division  
 213-893-0718

## WHITTIER FIELD RULES

Date:  
5/30/2007

Area(s) Rideout Heights	Zone(s)/Pool(s) A-3, Miocene, Pliocene
----------------------------	---

**CASING PROGRAM**

Casing String	Cementing Depth		Annular Cement Fill (Marker or Zone + ___')
	Marker or Zone	Remarks	
Conductor	As needed, 80'±		To Surface
Surface	400' – 500' ±		To Surface
Production	Through intended zone	Top of Repetto with liner completion	500' above upper hydrocarbon zone and 100' above base of fresh water.
Liner (optional completion)	Through intended zone		

**GEOLOGIC DATA**

Reference: Pages 583-588 in DOGGR publication TR-12, Volume 2, California Oil & Gas Fields.

**BLOWOUT PREVENTION EQUIPMENT PROGRAM (Referenced from MO7)**

Operation	Surface Pressure Category	DOGGR Class	Additional Requirements
Drilling	Medium	IIIB2M	Hydraulic BOPE
Completion	Medium	II2M	Manual or Hydraulic BOPE
Perforating	Medium	Lubricator or pack-off	
Additional Comments:			

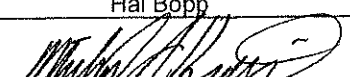
**BASE OF FRESH WATERS**

Marker:	150' – 650' subsurface	Comments: BFW varies with proximity (north-south) of the Whittier Fault.
---------	------------------------	--

**GENERAL COMMENTS**

*Field rules apply to development wells only. All operations are subject to California Code of Regulations., Title 14, Division 2, Chapter 4.*

Hal Bopp, State Oil and Gas Supervisor

By  \_\_\_\_\_

State of California  
The Resources Agency  
Department of Conservation

June 9, 2006

**NOTICE OF ASSESSMENT  
OIL AND GAS PRODUCED, CALENDAR YEAR 2005  
\*\*P. J. & P. M. Pace Trustees\*\***

Operator Code	Number of bbls of petroleum	Number of 10 Mcf of Gas	Total bbls Equivalent
P0125	1,098	0	1,098

Total Assessment Payable	Payment due on or before 08/15/2006
\$ 67.95	\$ 67.95

Two copies of this notice are provided. Include one copy with your payment; and keep one for your records. Make remittance payable to State Treasurer and mail to:

**STATE TREASURER  
ATTN: CASH MANAGEMENT DIVISION  
P. O. BOX 942809  
SACRAMENTO, CA 94209-0001**

**\*\* GENERAL INFORMATION \*\***

The assessment on oil and gas produced in California is provided for in Division 3 of the Public Resources Code. The assessed amount shown must be paid on or before August 15, 2006. A penalty of 10% will be applied to late payments, plus interest at 1.5% per month.

The Oil and Gas Assessment Roll will be delivered to the State Controller on July 1, 2004. If any producer is dissatisfied with the assessment made or the charges fixed by the department, he may apply to the State Controller prior to that date to have a correction made.

The funds raised from this assessment are deposited in the Oil, Gas, and Geothermal Administrative Fund, and are used to support the Oil and Gas Regulatory Program in the Department of Conservation. The assessment is made per barrel of oil, or per ten thousand cubic feet of gas produced during the previous calendar year. Listed below are the estimates of program costs and statewide production upon which the assessment rate is based:

DIVISION PROGRAM COSTS, FISCAL YEAR 2007-2008	\$15,400,088
STATEWIDE TOTAL ASSESSABLE OIL, 2005 (bbls)	227,964,933
STATEWIDE TOTAL ASSESSABLE GAS, 2005 (10Mcf)	20,869,080
STATEWIDE TOTAL ASSESSABLE EQUIVALENT, 2005	248,834,013
RATE PER EQUIVALENT BBL OR 10Mcf OF GAS	\$0.06188900

If you have questions or need additional information, please call Jim Campion, (916) 445-9686 or write:  
Division of Oil, Gas, and Geothermal Resources,  
801 K Street, 20<sup>th</sup> Floor, MS 20-20,  
Sacramento, CA 95814-3530.

State of California  
The Resources Agency  
Department of Conservation

June 9, 2006

**NOTICE OF ASSESSMENT  
OIL AND GAS PRODUCED, CALENDAR YEAR 2005  
\*\*P. J. & P. M. Pace Trustees\*\***

Operator Code	Number of bbls of petroleum	Number of 10 Mcf of Gas	Total bbls Equivalent
P0125	1,098	0	1,098

Total Assessment Payable	Payment due on or before 08/15/2006
\$ 67.95	\$ 67.95

Two copies of this notice are provided. Include one copy with your payment; and keep one for your records. Make remittance payable to State Treasurer and mail to:

**STATE TREASURER  
ATTN: CASH MANAGEMENT DIVISION  
P. O. BOX 942809  
SACRAMENTO, CA 94209-0001**

**\*\* GENERAL INFORMATION \*\***

The assessment on oil and gas produced in California is provided for in Division 3 of the Public Resources Code. The assessed amount shown must be paid on or before August 15, 2006. A penalty of 10% will be applied to late payments, plus interest at 1.5% per month.

The Oil and Gas Assessment Roll will be delivered to the State Controller on July 1, 2004. If any producer is dissatisfied with the assessment made or the charges fixed by the department, he may apply to the State Controller prior to that date to have a correction made.

The funds raised from this assessment are deposited in the Oil, Gas, and Geothermal Administrative Fund, and are used to support the Oil and Gas Regulatory Program in the Department of Conservation. The assessment is made per barrel of oil, or per ten thousand cubic feet of gas produced during the previous calendar year. Listed below are the estimates of program costs and statewide production upon which the assessment rate is based:

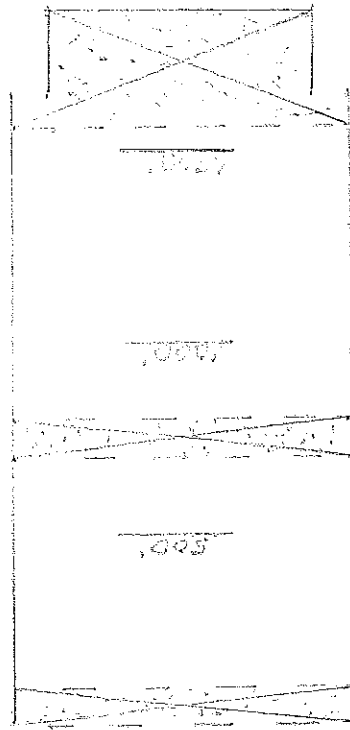
DIVISION PROGRAM COSTS, FISCAL YEAR 2007-2008	\$15,400,088
STATEWIDE TOTAL ASSESSABLE OIL, 2005 (bbls)	227,964,933
STATEWIDE TOTAL ASSESSABLE GAS, 2005 (10Mcf)	20,869,080
STATEWIDE TOTAL ASSESSABLE EQUIVALENT, 2005	248,834,013
RATE PER EQUIVALENT BBL OR 10Mcf OF GAS	\$0.06188900

**If you have questions or need additional information, please call Jim Campion, (916) 445-9686 or write:  
Division of Oil, Gas, and Geothermal Resources,  
801 K Street, 20<sup>th</sup> Floor, MS 20-20,  
Sacramento, CA 95814-3530.**

Plug 1847, 1067

Plus 800 - 700  
850 750

Plug 1847, 0



640' 0" 1847, 1067

ETOC

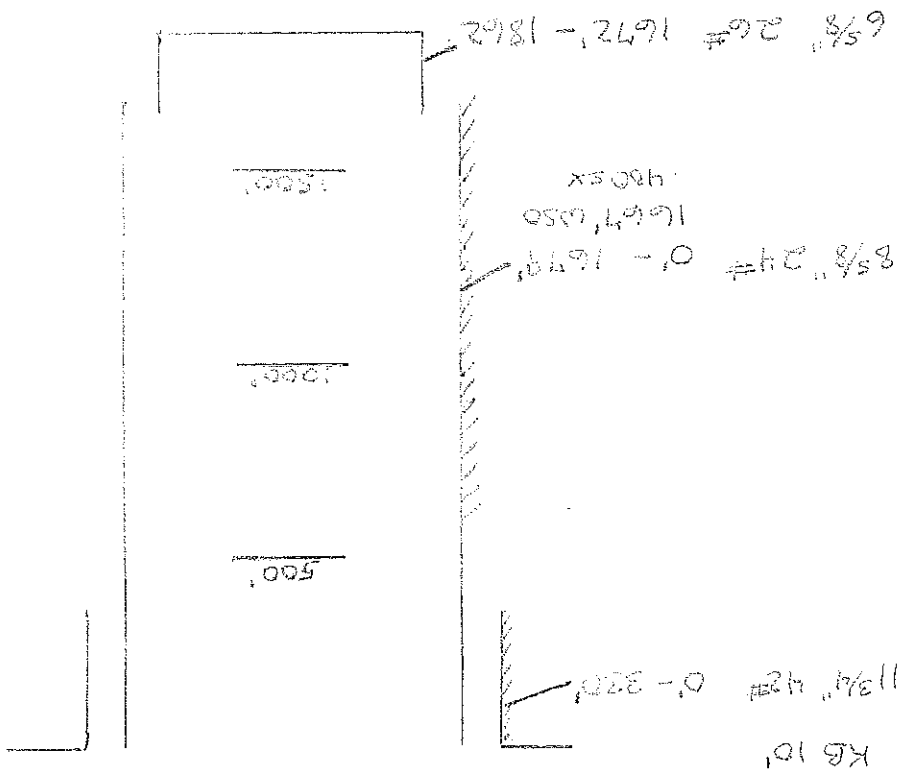
554' 0" 0 - 1847  
1847, 1067

110/4" 42# 0-270

M 8 10'

STÄDTLER

No. 937 811E  
Engineer's Computation Pad



**STÄDTLER**  
 No. 937 811E  
 Engineer's Computation Pad

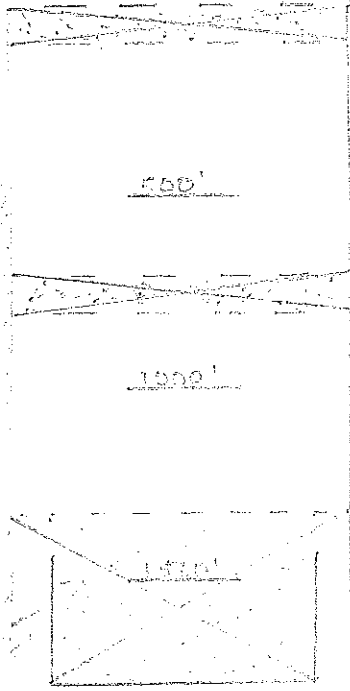


RHC # 2

APZ #  
237-18414

No. 937 811E  
Engineer's Computation Pad  
STEDTLER

12 1/8" x 9" 0-51'



Plug 1001-01

500'

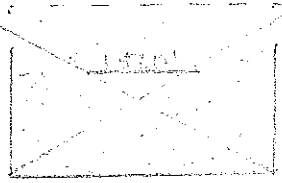
B.F.W. 760'  
Plug 300'-700'

1000'

7' 200'' 0-1000''  
1000 1000''  
1500  
E100

Plug 1772'-1890

1 1/2" x 1 1/2" 1000-1500'



AHC #2

APC  
037-18414

12 1/2" o.s.g. 7# 0'-51' ↘

500'

7' 20# 0' - 1545' ↘  
L250 1545'  
450' SW  
S77°E

1000'

1500'

5 1/2" 15# 1440' N - 1772' ↘

STAEDETLER  
No. 937 811E  
Engineer's Computation Pad

## CRITICAL WELL

As defined in the California Administrative Code, Title 14, Section 1720 (a), "Critical well" means a well within:

- (1) 300 feet of the following:
  - (A) Any building intended for human occupancy that is not necessary to the operation of the well; or
  - (B) Any airport runway.
  
- (2) 100 feet of the following:
  - (A) Any dedicated public street, highway, or nearest rail of an operating railway that is in general use;
  - (B) Any navigable body of water or watercourse perennially covered by water;
  - (C) Any public recreational facility such as a golf course, amusement park, picnic ground, campground, or any other area of periodic high-density population; or
  - (D) Any officially recognized wildlife preserve.

Exceptions or additions to this definition may be established by the supervisor upon his own judgment or upon written request of an operator. This written request shall contain justification for such an exception.

## CRITICAL WELL

As defined in the California Administrative Code, Title 14, Section 1720 (a), "Critical well" means a well within:

- (1) 300 feet of the following:
  - (A) Any building intended for human occupancy that is not necessary to the operation of the well; or
  - (B) Any airport runway.
  
- (2) 100 feet of the following:
  - (A) Any dedicated public street, highway, or nearest rail of an operating railway that is in general use;
  - (B) Any navigable body of water or watercourse perennially covered by water;
  - (C) Any public recreational facility such as a golf course, amusement park, picnic ground, campground, or any other area of periodic high-density population; or
  - (D) Any officially recognized wildlife preserve.

Exceptions or additions to this definition may be established by the supervisor upon his own judgment or upon written request of an operator. This written request shall contain justification for such an exception.